



# Blade Specification Sheet

**\* Required Fields**

\*  Contact \_\_\_\_\_  
 Company \_\_\_\_\_  
 Address \_\_\_\_\_  
 \_\_\_\_\_  
 Phone (     ) - \_\_\_\_\_  
 Fax (     ) - \_\_\_\_\_  
 e-mail \_\_\_\_\_

Part Number 

--	--	--	--	--	--	--	--	--	--	--	--

\*Impeller Type (CSI, F, K, E, G) \_\_\_\_\_

\*Impeller Diameter (inches) \_\_\_\_\_ inches

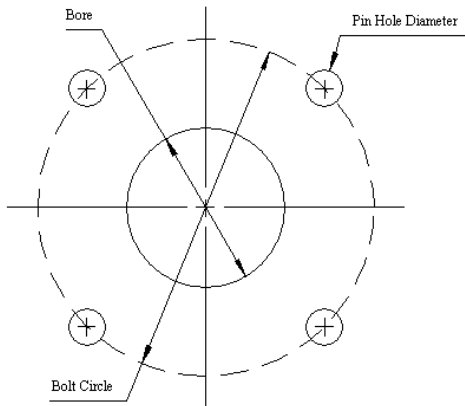
\*Bore (Center Hole) Diameter \_\_\_\_\_ inches

\*Material of Construction \_\_\_\_\_  
 (Stainless Steel / Heat Hardened / Plasma Coated / Other -- Specify)

Disperser Mfg \_\_\_\_\_ Mfg Model \_\_\_\_\_

Mfg Serial \_\_\_\_\_ In-Plant Designation \_\_\_\_\_  
 (If Any)

\*Pinholes

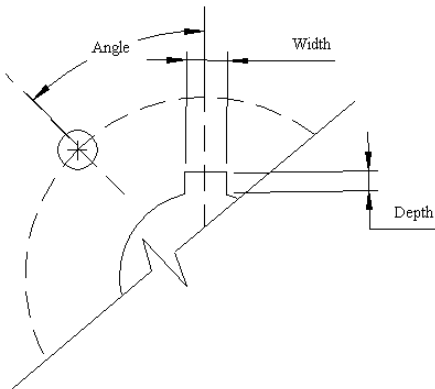


Some Machines drive their blades via a series of pins or bolts extending from the mounting hub or blade reinforcing disks. The following information is required for these pinholes.

Quantity (number of pinholes) \_\_\_\_\_  
 Diameter \_\_\_\_\_ inches  
 Bolt Circle Diameter \_\_\_\_\_ inches

Other holes may also exist on the blade. These holes may have been intended for alternate mounting arrangements or used for alignment during blade fabrication. Although they are not detrimental to blade performance, they are not required and information on these are unnecessary.

\*Keyway



Other blades are driven by a key. Dimensions of the keyway are required for these blades.

Size  
 Width \_\_\_\_\_ Depth \_\_\_\_\_ inches

The keyway may be used in conjunction with pinholes or set screws. If so, the orientation of the keyway to pins or set screws is also required.

Angle (keyway to pinhole) \_\_\_\_\_ degrees